



**New York State  
Cares for Communities**

**Welcome to the  
NYS Cares for  
Communities  
*Virtual Cafe!***

---

Presented by  
Binghamton University &  
Change Impact

*November 2021*

# Agenda



**New York State  
Cares for Communities**

- Introduction
  - Goals:
    - Connect with NYSCFC team & partners
    - Linking work to Community Schools
- Icebreaker
- NYSCFC Overview
- Professional Development & Support
- Wrap-up & Next Steps

# Warm-up!



**New York State  
Cares for Communities**

What is one thing -  
person, place or  
activity that brings  
you joy?





**New York State  
Cares for Communities**

# Giving some context:

- NYS Cares for Communities (NYSCFC) is an expansion of the NYSED Community Schools Technical Assistance Centers (CSTACs)
- In 2018 NYSED funded three CSTACs
  - Central/Western CSTAC is led by Binghamton University
  - Eastern CSTAC is led by Rockland 21C
  - New York City CSTAC is led by Fordham University
- NYSED CSTACs are designed to:
  - Facilitate the development and sustainability of community schools
  - Increase statewide capacity to support effective community school strategies
  - They do this through: Consultation, Trainings, Ongoing support as needed
- In 2021 - NYS allocated some of their CARES funding to expanded support to community-based and faith-based organizations
  - Binghamton University and Fordham University now lead what is known as NYSCFC

# The CARES Act

## *The Coronavirus Aid, Relief, and Economic Security Act*



New York State  
Cares for Communities

### BACKGROUND

Federal funds allocated via NYS  
Education Department

Designed to support  
communities most impacted by  
COVID-19

Funding will support non-profit  
organizations supporting  
Identified communities

### GOALS

Offer Social-Emotional and Mental  
Health support

Improve parent and family  
engagement

Leverage resources in partnership  
with school districts

Address needs of students,  
families, and communities impacted  
by COVID-19 and  
support during remote learning

### DISTRIBUTION

Partnership with community  
and faith-based organizations  
with 501(C)3 status and  
evidence of serving youth and  
families

Eligibility limited to  
organizations serving one or  
more counties identified as  
being most impacted by  
COVID-19

# Program Areas

Organizations provide services/programs in one or more of the following areas:



**New York State  
Cares for Communities**

**Social-Emotional Learning  
and/or Mental Health  
Services**

**Academic Enrichment**

**Digital Literacy for  
Students and Families**

**Family Services**

# Geographic Eligibility

Organizations serve populations in one or more of the following counties:



**New York State  
Cares for Communities**

## Binghamton University

### Region 1

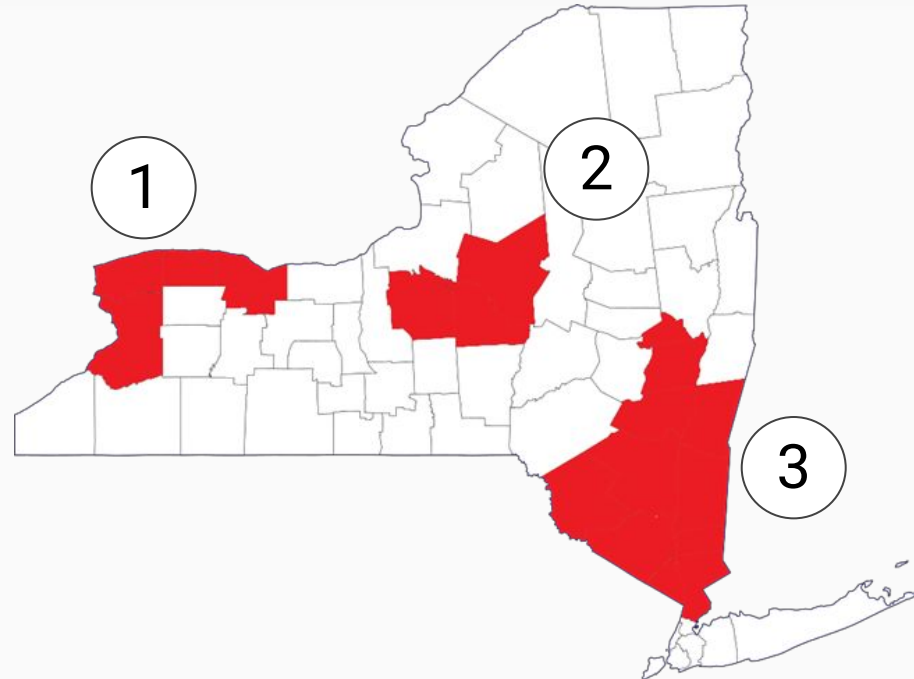
Erie County  
Monroe County  
Niagara County  
Orleans County

### Region 2

Madison County  
Oneida County  
Onondaga County

### Region 3

Albany County  
Columbia County  
Dutchess County  
Greene County  
Orange County  
Putnam County  
Rockland County  
Schenectady County  
Sullivan County  
Ulster County  
Westchester County



# NYSCFC Overview



**New York State  
Cares for Communities**

- At least one proposal was awarded in each region
- 20 total partners were selected
- You should have received information about the execution of your contracts.
- In January, we will be asking for an updated work plan.
- Final report will be due August 2022 - more to come on this soon!



# What is a community school?



New York State  
Cares for Communities

A **community school** is a strategy (not a program) whose *integrated* focus on academics, services, supports and opportunities leads to improved student learning, stronger families and healthier communities.

**University-assisted community schools** mobilize the vast resources of universities to help traditional public schools (Netter Center at the University of Pennsylvania).

## “Pillars” of Community Schools

Integrated  
Student  
Supports

Expanded  
and Enriched  
Learning Time  
&  
Opportunities

Active Family  
& Community  
Engagement

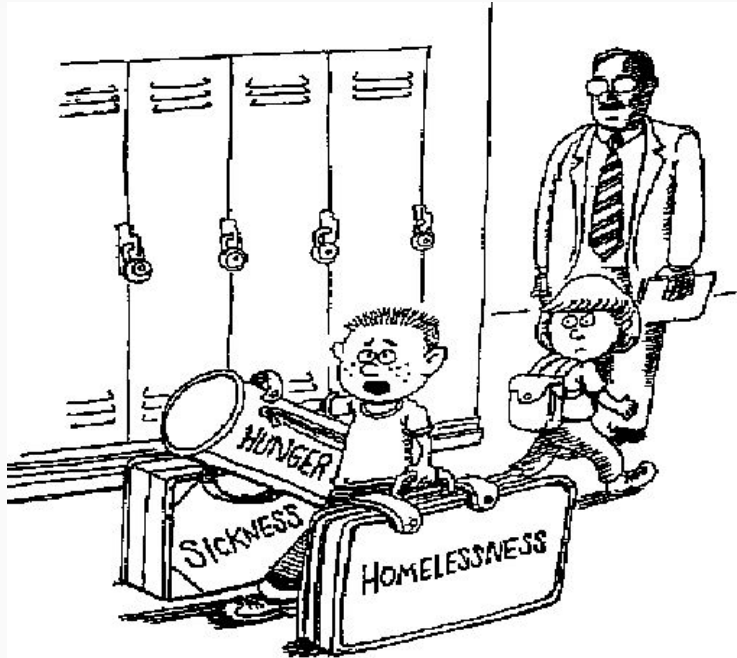
Collaborative  
Leadership  
and Practice

Community-  
based  
Teaching &  
Learning

# Why are they important?



New York State  
Cares for Communities



*Could someone help me with these? I'm late for math class.*

Content from Quinn, Jane (2006). "Community Schools: A Strategy, Not a Program". Powerpoint. *National Center for Community Schools. Children's Aid Society.*

# Binghamton University Community Schools



New York State  
Cares for Communities

## Regional Network

Broome County

## NYS Central/Western Community Schools Technical Assistance Center

Central and Western NYS

## NYS Cares for Communities

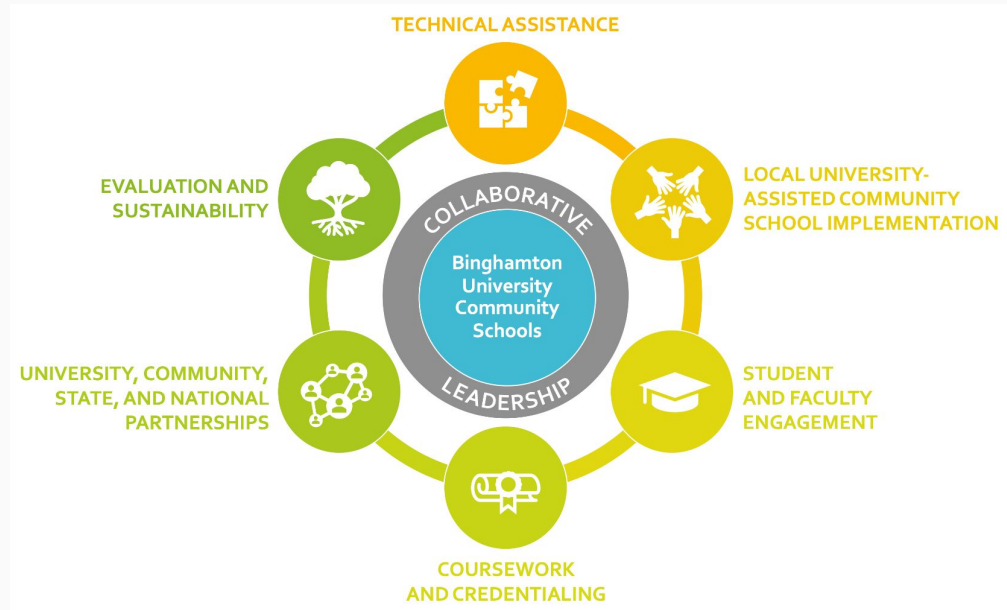
All of NYS except NYC/LI

## 21 Century Community Learning Centers Technical Assistance Resource Center

All of NYS except NYC

## University-Assisted Community School Regional Training Center

All of NYS and NJ



# Professional Development & Support



New York State  
Cares for Communities

- Understanding and lifting up community initiatives
- Live workshops and networking opportunities
- Asynchronous (self-paced) courses with live virtual debriefs
- Community of Practice
- Support for families

Topics and areas of interest:

- Family engagement
- SEL
- Resource sharing

# Professional Development & Support



New York State  
Cares for Communities

How can we  
support you?



# Professional Development & Support



New York State  
Cares for Communities

## Asynchronous course preview

- Self-paced: engage any time, anywhere (start/pause when it's convenient)
- Interactive: videos, readings, slides, check for understanding,
- 1.5 hour commitment
- Certificate upon completion!
- Live virtual debrief with peers

The screenshot displays the Teachable Platform interface. On the left is a navigation sidebar with a home icon, a gear icon, and a progress indicator showing '0% COMPLETE'. Below this, there are sections for 'Section 1: Course Introduction' and 'Section 2: Understanding Diversity, Equity, and Inclusion'. Section 1 includes 'Course Introduction (1:28)' and 'Reflection Activity: I Am...'. Section 2 includes 'Terms and Definitions (2:53)', 'Reflection Activity 1: Inclusive Environments', and 'Equality and Equity (5:00)'. On the right, the main content area shows a 'Complete and Continue' button, a 'Welcome to the Teachable Platform!' message, and a 'Hi there!' greeting. Below the greeting, there is a paragraph of text and a section titled 'Understanding the Course Curriculum View' with a 'Start next lecture' button.

# What's next?



New York State  
Cares for Communities

## Clarifications and Next Steps

- Stay Tuned:
  - Follow-up email
    - Equity course and instructions
    - Debrief date / time
    - Link to calendar to sign up for individual check-ins
    - Community of Practice updates
- Questions?

# Contact Information



New York State  
Cares for Communities

## NYSCFC Team

**Luann Kida, LMSW**, NYSCFC Director,  
Binghamton University

**Tara Edmunds**, NYSCFC Assistant Director,  
Binghamton University

To contact: [NYSCFC@binghamton.edu](mailto:NYSCFC@binghamton.edu)

## Partner Organization

**Change Impact**

**Ali Wittenberg**, Director of Capacity-Building  
Projects